

Largo |

identifying intervals by ear 2nds, 3rds, & 4ths

Have your teacher play 2nds, 3rds & 4ths and using only your ears, write down what interval you think it is!

1. _____

2. _____

3. _____

4. _____

5. _____

6. _____

7. _____

8. _____

9. _____

10. _____

11. _____

12. _____

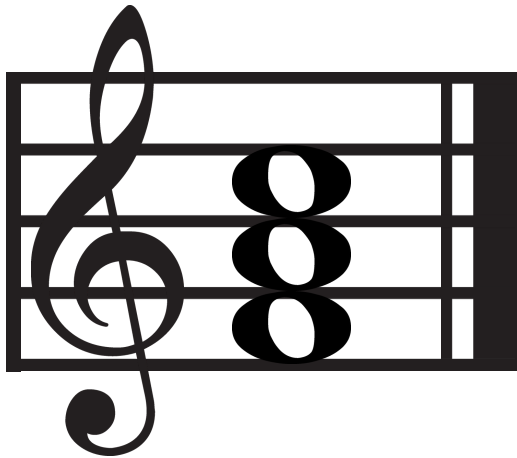
Largo

F major scale, both hands

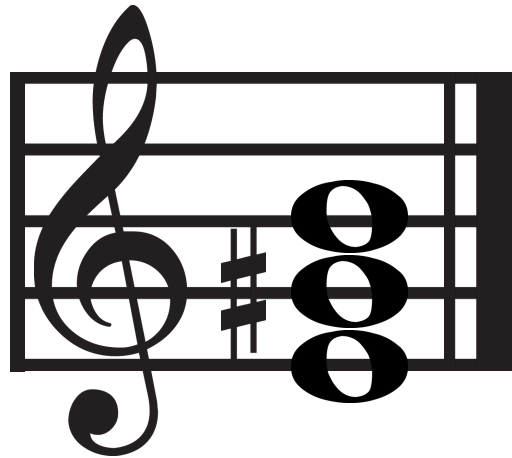
The image displays a musical score for the F major scale, both hands, in Largo tempo. The score is written on a grand staff consisting of two treble clefs and two bass clefs. The key signature is one flat (Bb), and the time signature is common time (C). The melody in the right hand (treble clef) starts on F4 and ascends stepwise to C5, while the melody in the left hand (bass clef) starts on F3 and descends stepwise to C2. The tempo is marked as Largo.

Largo

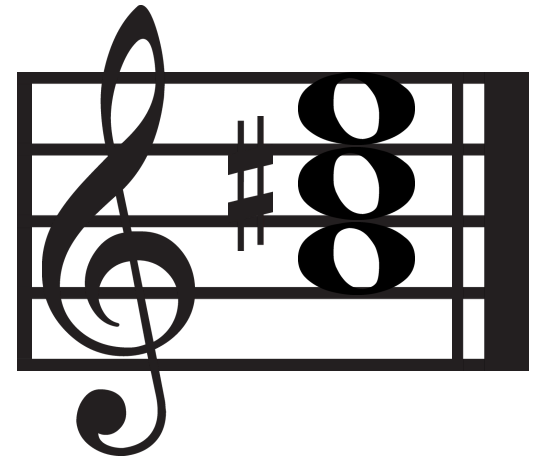
A minor, E major & A major chords



A MINOR



E MAJOR



A MAJOR